

Raising the bar in innovative  
DC MLPE solar power systems

## RSD-S-PLC

- Meets NEC2017&2020 (690.12) requirements
- Executes rapid shutdown of system when Transmitter-PLC signal is absent
- Meets SunSpec requirements

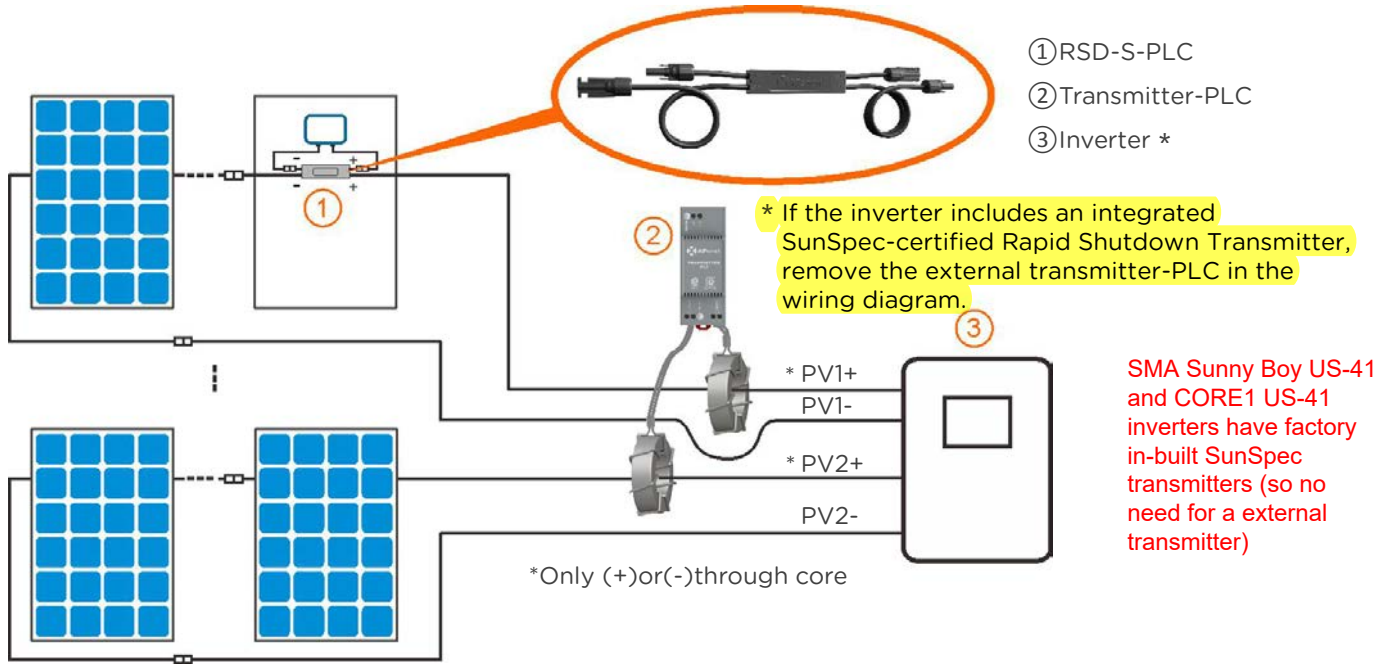
### RSD-S-PLC Technical Data

Model	RSD-S-PLC
<b>Input Data (DC)</b>	
Input Operating Voltage Range	8-80V
Maximum Cont. Input Current (Imax)	15A
<b>Output Data (DC)</b>	
Output Operating Voltage Range	8-80V
Maximum System Voltage	1000V/1500V
<b>Mechanical Data</b>	
Operating Ambient Temperature Range	-40 °F to +185 °F (-40 °C to + 85 °C)
Dimensions (without cable&connectors)	5" x 1.2" x 0.6"(129 mm x 30 mm x 16 mm)
Cable Length	Input 250mm/Output 1200mm
Connector	MC4 or Customize
Enclosure Rating	Type 6P / IP68
Over Temperature Protection	Yes
<b>Features &amp; Compliance</b>	
Communication	PLC
Safety Compliance	NEC2017&2020 (690.12); UL1741; CSA C22.2 No. 330-17; IEC/EN62109-1; 2PFG2305
EMC Compliance	FCC Part15; ICES-003;IEC/EN61000-6-1/-2/-3/-4

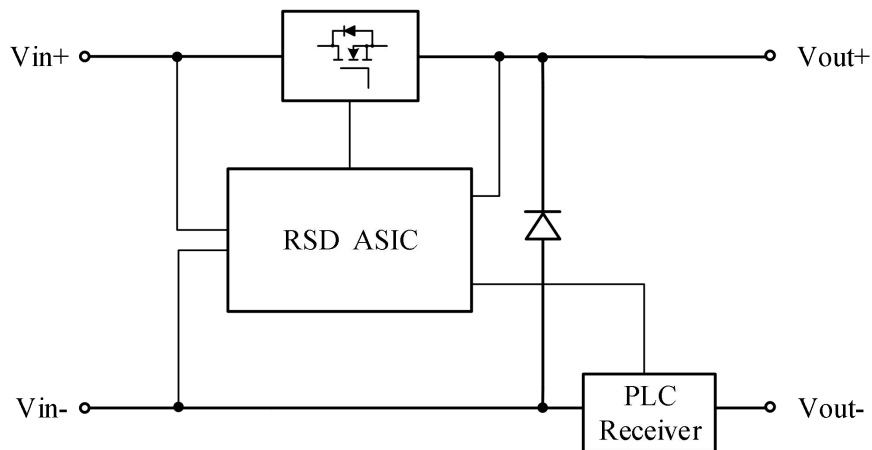
© All Rights Reserved

The RSD-S-PLC meets SunSpec requirements, maintaining normal function by continually receiving a heartbeat signal from the APsmart Transmitter. The RSD executes rapid system shutdown when the Transmitter signal is absent. Users can manually execute rapid shutdown using Transmitter breaker switch.

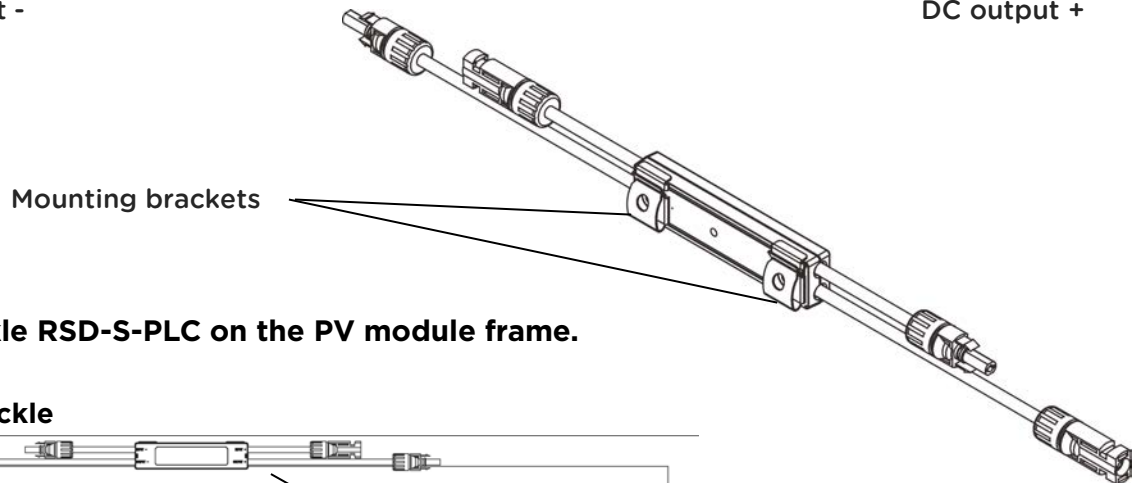
## RSD-S-PLC Wiring Diagram



## Working Schematic Diagram

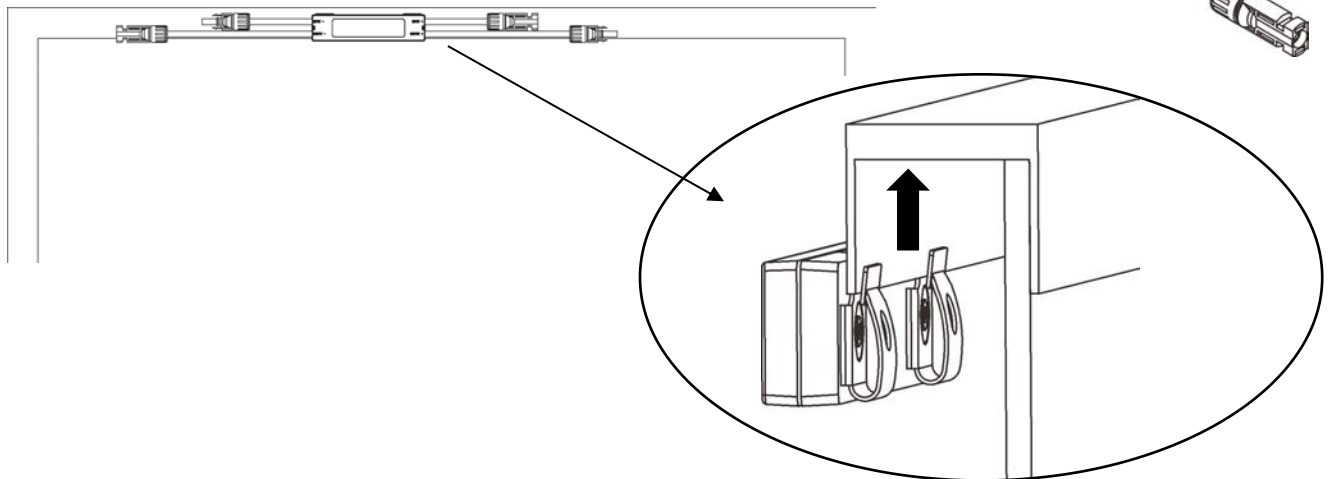


# RSD-S-PLC Quick Installation Guide

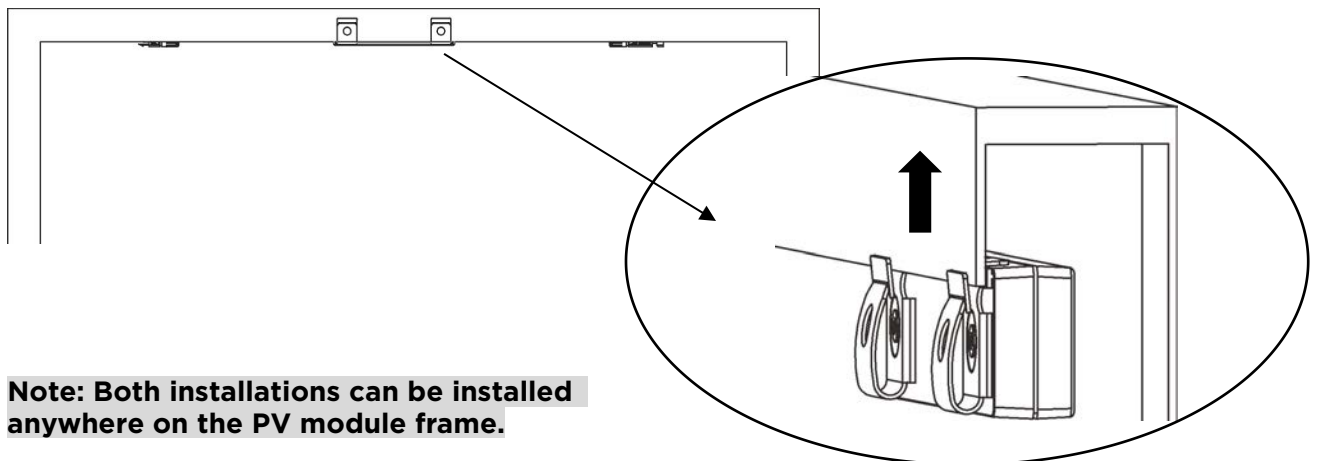


**Step1. Buckle RSD-S-PLC on the PV module frame.**

**A. Front buckle**



**B. Back buckle**



**Note: Both installations can be installed anywhere on the PV module frame.**

**Step 2. Connect the input port of the RSD-S-PLC to the junction box, and connect the output ports of two adjacent RSD-S-PLCs to the inverter.**



Rapid Shutdown

**CERTIFIED**

**THE SUNSPEC ALLIANCE HEREBY CERTIFIES THAT**

Altenergy Power System Inc.

**PRODUCT NAME**

APsmart RSD-S-PLC

**COMPONENT NAME**

RSD-S-PLC

**PRODUCT MODELS**

RSD-S-PLC-A  
RSD-S-PLC-B

**Has been issued this  
SunSpec Certified Product Award for  
Successful Testing and Certification of the**

**SUNSPEC DEVICE CATEGORY**

Receiver

**AUTHORIZED TEST LABORATORY**

CSA

**TESTING DATE**

9/5/2019

**AWARDED ON**

9/20/2019

**CERTIFICATE NUMBER**

RS-000006

Tom Tansy, Chairman

