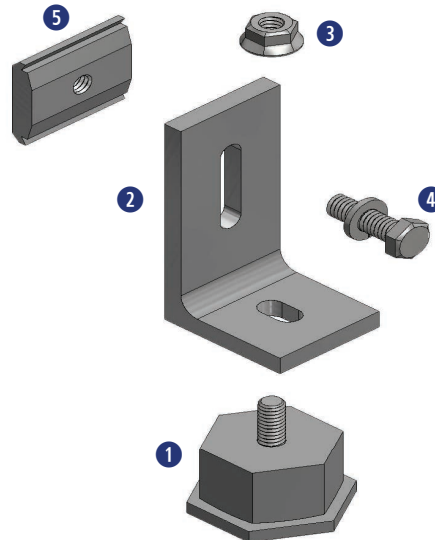


Required Tools

- Hammer or Stud Finder
- Roof Marking Crayon
- Drill with 3/16" Pilot Drill Bit
- Torque Wrench
- Socket Wrench
- 1/2" Socket

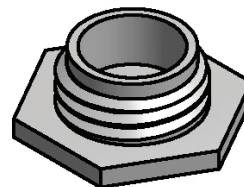
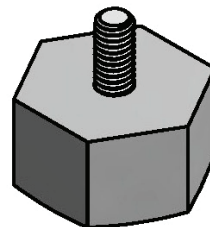
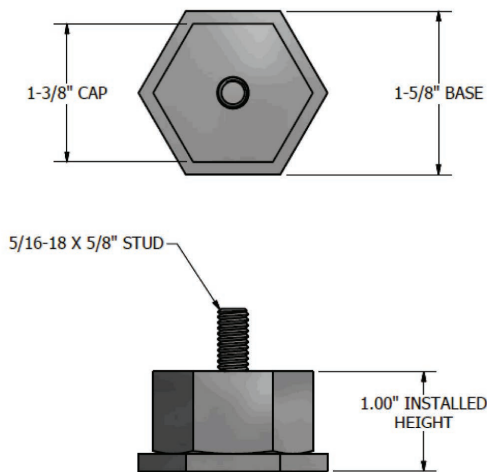
Materials Included - Metal Roof Base

- ① (1) SnapNrack Metal Roof Base
- ② (1) SnapNrack All Purpose L Foot
- ③ (1) 5/16"-18 SS Flange Nut
- ④ (1) 5/16"-18 X 1-1/4" SS Flange Bolt
- ⑤ (1) SnapNrack Channel Nut



Other Materials Required

- ① (1) 5/16" Lag Screw or 1/4" Self-drilling Screw (Not Shown)



Dimensioned Metal Roof Base Assembly

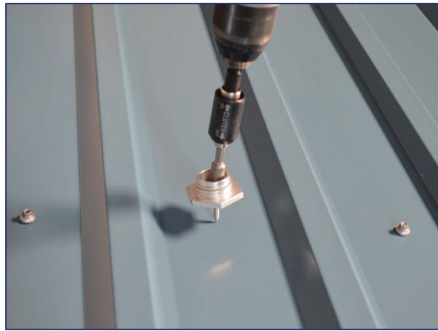
Application Note:

Install on metal roof profiles with flat surface large enough to accommodate 1-5/8" wide base.

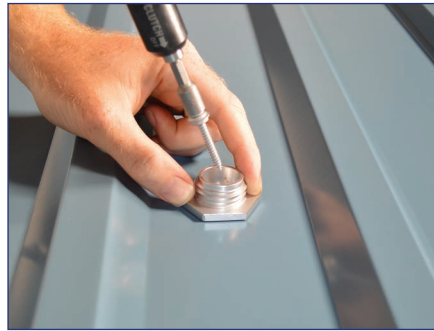
Install Note:

Grounding and bonding of mounting system to metal roof panels shall meet local AHJ requirements.

INSTALLATION INSTRUCTIONS



1) Using roof attachment locations drawn during system layout, drill a pilot hole through the roofing material into the roof framing member.



2) Attach the base with 5/16" lag screw (or 1/4" self-drilling screw for metal structures), drive lag screw for minimum 2.5" embedment into the roof framing member.



3) Thread Metal Roof Base cap onto Metal Roof Base bottom, ensuring cap is fully seated to base.



Install Note:

Ensure the lag or self-drilling screws will be installed in a solid portion of the roof framing member.

If the roof framing member is not found then seal the pilot hole immediately with roofing sealant.



Install Note:

Ensure area is free from metal shavings and debris before installing Metal Roof Base. Metal roofs with excessive debris, corrosion, or non-factory coating should be evaluated for adequate sealing surface.

Additional roof sealant not required but can be applied after tightening the Metal Roof Base to roof, if desired.



Install Note:

Take care to ensure the base does not twist when cap is tightened.

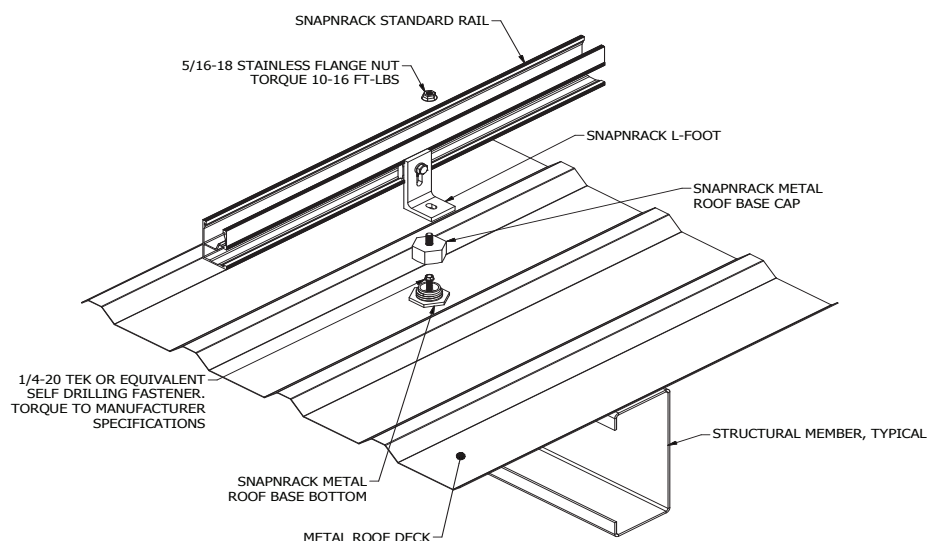


4) Attach L Foot to stud in Metal Roof Base cap and tighten hardware to 10+ ft-lbs.




Best Practice:

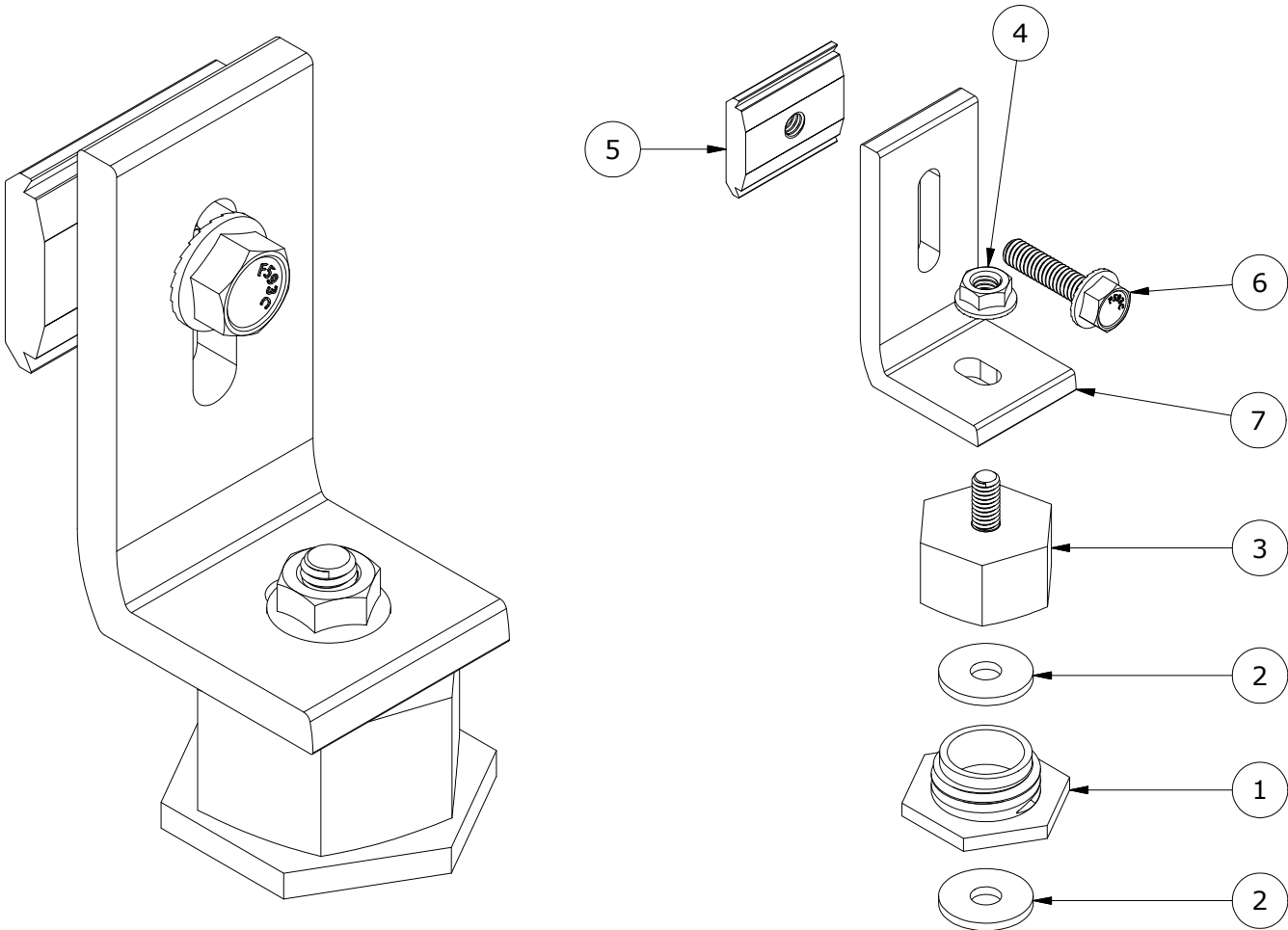
If using an impact driver, finish tightening lag screw with a hand wrench.



Best Practice:

Finish tightening hardware with a hand wrench to prevent L Foot from rotating.

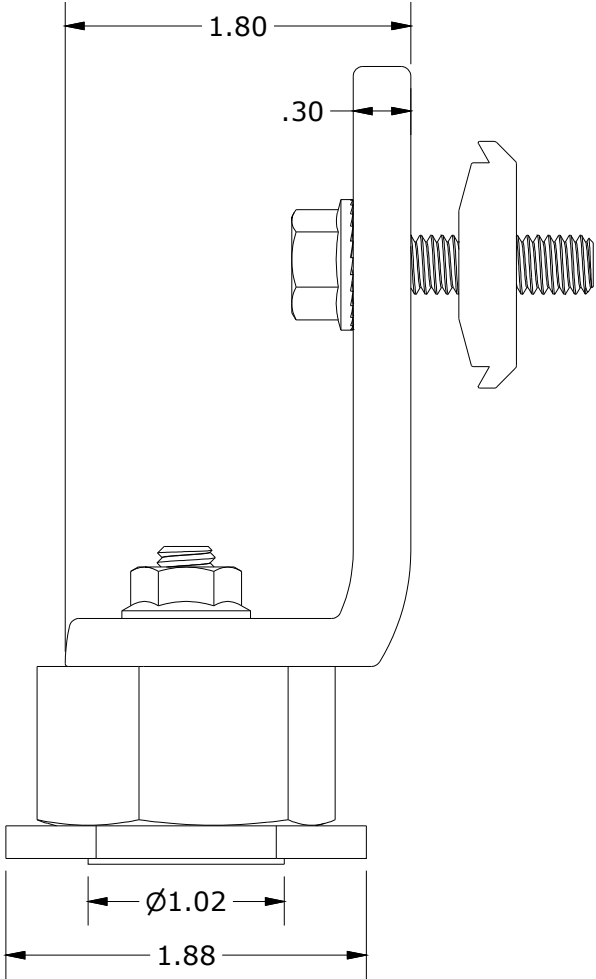
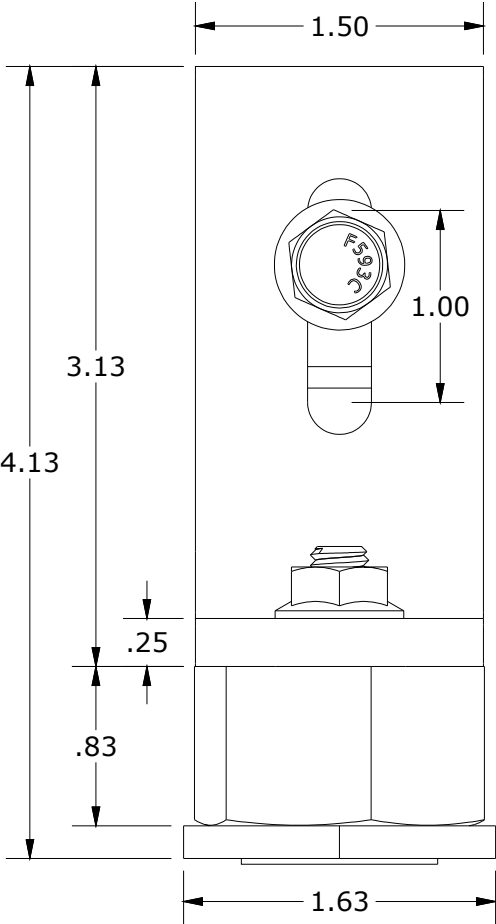
DESCRIPTION:	DRAWN BY:	
SNAPNRACK, METAL ROOF BASE	D.Ryan	
PART NUMBER(S):	REVISION:	595 MARKET STREET, 29TH FLOOR • SAN FRANCISCO, CA 94105 USA PHONE (415) 580-6900 • FAX (415) 580-6902 <small>THE INFORMATION IN THIS DRAWING IS CONFIDENTIAL AND PROPRIETARY. ANY REPRODUCTION, DISCLOSURE, OR USE THEREOF IS PROHIBITED WITHOUT THE WRITTEN CONSENT OF SUNRUN SOUTH LLC.</small>
242-02037	B	



PARTS LIST		
ITEM	QTY	DESCRIPTION
1	1	SNAPNRACK METAL ROOF BASE BOTTOM
2	2	SNAPNRACK METAL ROOF BASE SEALING WASHER
3	1	SNAPNRACK METAL ROOF BASE CAP
4	1	NUT, FLANGE, SERRATED, 5/16IN-18, SS
5	1	SNAPNRACK CHANNEL NUT 5/16IN-18
6	1	BOLT, FLANGED HEX, 5/16IN-18 X 1-1/4IN, SS
7	1	SNAPNRACK, AP90 L FOOT PRC, CLEAR

MATERIALS:	6000 SERIES ALUMINUM, STAINLESS STEEL	OPTIONS:
DESIGN LOAD (LBS):	405 UP, 788 DOWN, 236 SIDE	
ULTIMATE LOAD (LBS):	1098 UP, 3364 DOWN, 1340 SIDE	
TORQUE SPECIFICATION:	10+ LB-FT	
CERTIFICATION:	UL 2703, FILE E359313	
WEIGHT (LBS):	0.43	

DESCRIPTION: SNAPNRACK, METAL ROOF BASE	DRAWN BY: D.Ryan	<div>SnapNrack™ Solar Mounting Solutions</div> <div>595 MARKET STREET, 29TH FLOOR • SAN FRANCISCO, CA 94105 USA PHONE (415) 580-6900 • FAX (415) 580-6902</div> <div>THE INFORMATION IN THIS DRAWING IS CONFIDENTIAL AND PROPRIETARY. ANY REPRODUCTION, DISCLOSURE, OR USE THEREOF IS PROHIBITED WITHOUT THE WRITTEN CONSENT OF SUNRUN SOUTH LLC.</div>
	REVISION: B	
PART NUMBER(S): 242-02037		



ALL DIMENSIONS IN INCHES