

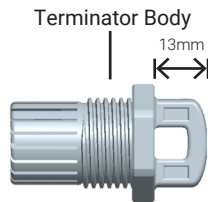
ENPHASE Q CABLE TERMINATOR

Terminating the End of the Q Cable

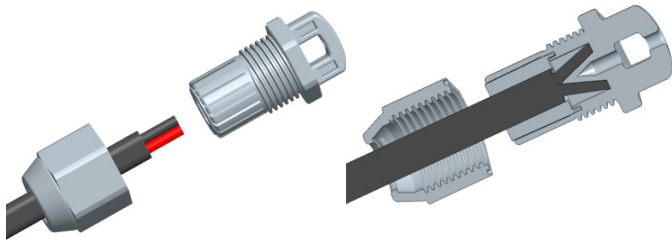
Use the Enphase Q Cable Terminator to seal unused cable ends.

For full installation instructions for the Enphase IQ 6 and IQ 6+ Microinverters, read and follow all warnings and instructions in this guide and in the *Enphase IQ 6 and IQ 6+ Microinverter Installation and Operation Manual* at: enphase.com/support. Safety warnings are listed to the right of this guide.

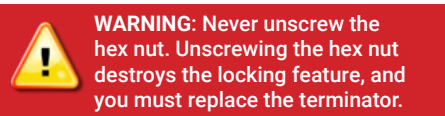
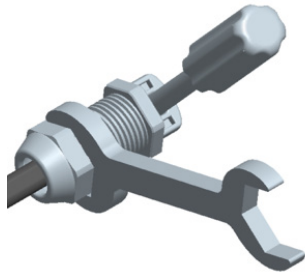
- A) Remove 13 mm (1/2") of the cable sheath from the conductors. Use the terminator loop to measure.



- B) Slide the hex nut onto the cable. There is a grommet inside of the terminator body that should remain in place.
C) Insert the cable into the terminator body so that each of the two wires land on opposite sides of the internal separator.



- D) Insert a screwdriver into the slot on the top of the terminator to hold it in place, and tighten nut with 27 mm open-end wrench or channel lock pliers until fully tightened.



Hold the terminator body stationary with the screwdriver and turn only the hex nut to prevent conductors from twisting out of the separator.

- E) Manage the terminated cable end to the PV racking with a cable clip or tie wrap so that the cable and terminator do not touch the roof.

SAFETY

IMPORTANT SAFETY INSTRUCTIONS. SAVE THIS INFORMATION.

This guide contains important instructions to follow during installation.

Safety Symbols	
	DANGER: This indicates a hazardous situation, which if not avoided, will result in death or serious injury.
	WARNING: This indicates a situation where failure to follow instructions may be a safety hazard or cause equipment malfunction. Use extreme caution and follow instructions carefully.
	NOTE: This indicates information particularly important for optimal system operation.

Safety Instructions	
	DANGER: Risk of electric shock. Do not use Enphase equipment in a manner not specified by the manufacturer. Doing so may cause death or injury to persons, or damage to equipment.
	WARNING: Risk of electric shock. Be aware that installation of this equipment includes risk of electric shock.
	DANGER: Risk of electric shock. Always de-energize the AC branch circuit before servicing. Never disconnect the DC connectors under load.
	DANGER: Risk of electric shock. Risk of fire. Only use electrical system components approved for wet locations.
	DANGER: Risk of electric shock. Risk of fire. Only qualified personnel should troubleshoot, install, or replace Enphase Microinverters or the Enphase Q Cable and Accessories.
	DANGER: Risk of electric shock. Do not install the Enphase Q Cable terminator while power is connected.
	DANGER: Risk of electric shock. Risk of fire. When stripping the sheath from the Enphase Q Cable, make sure the conductors are not damaged. If the exposed wires are damaged, the system may not function properly.
	WARNING: Before installing or using the Enphase Microinverter, read all instructions and cautionary markings in the technical description, on the Enphase Microinverter System, and on the photovoltaic (PV) equipment.

Safety Instructions Continued	
	WARNING: Use the terminator only once. If you open the terminator following installation, the latching mechanism is destroyed. If the latching mechanism is defective, do not use the terminator. Do not circumvent or manipulate the latching mechanism.
	WARNING: When installing the Enphase Q Cable, secure any loose cable to minimize tripping hazard.
	NOTE: To ensure optimal reliability and to meet warranty requirements, install the cable terminator according to the instructions in this guide.
	NOTE: Perform all electrical installations in accordance with all applicable local electrical codes: the Canadian Electrical Code, part 1; and the National Electrical Code (NEC); ANSI requirements, and NFPA 70.
	NOTE: When looping the Enphase Q Cable, do not form loops smaller than 4.75 inches (12 cm) in diameter.
	NOTE: When installing the Enphase Q Cable and accessories, adhere to the following: <ul style="list-style-type: none"> Do not expose the terminator or cable connections to directed, pressurized liquid (water jets, etc.). Do not expose the terminator or cable connections to continuous immersion. Do not expose the terminator or cable connections to continuous tension (e.g., tension due to pulling or bending the cable near the connection). Use only the connectors and cables provided. Do not allow contamination or debris in the connectors. Use the terminator and cable connections only when all parts are present and intact. Do not install or use in potentially explosive environments. Do not allow the terminator to come into contact with open flame. Fit the terminator using only the prescribed tools and in the prescribed manner. Use the terminator to seal the conductor end of the Enphase Q Cable; no other method is allowed.

